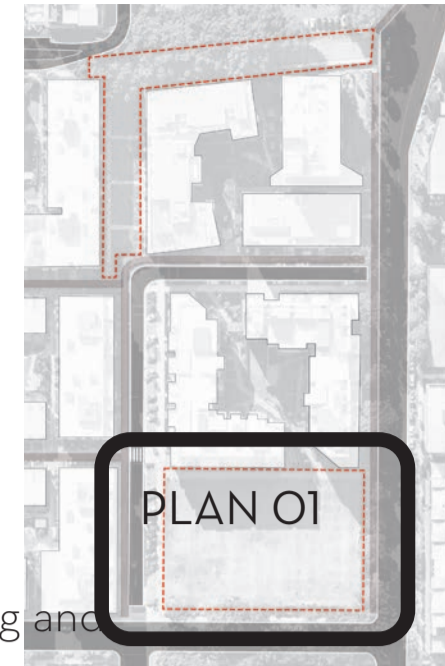
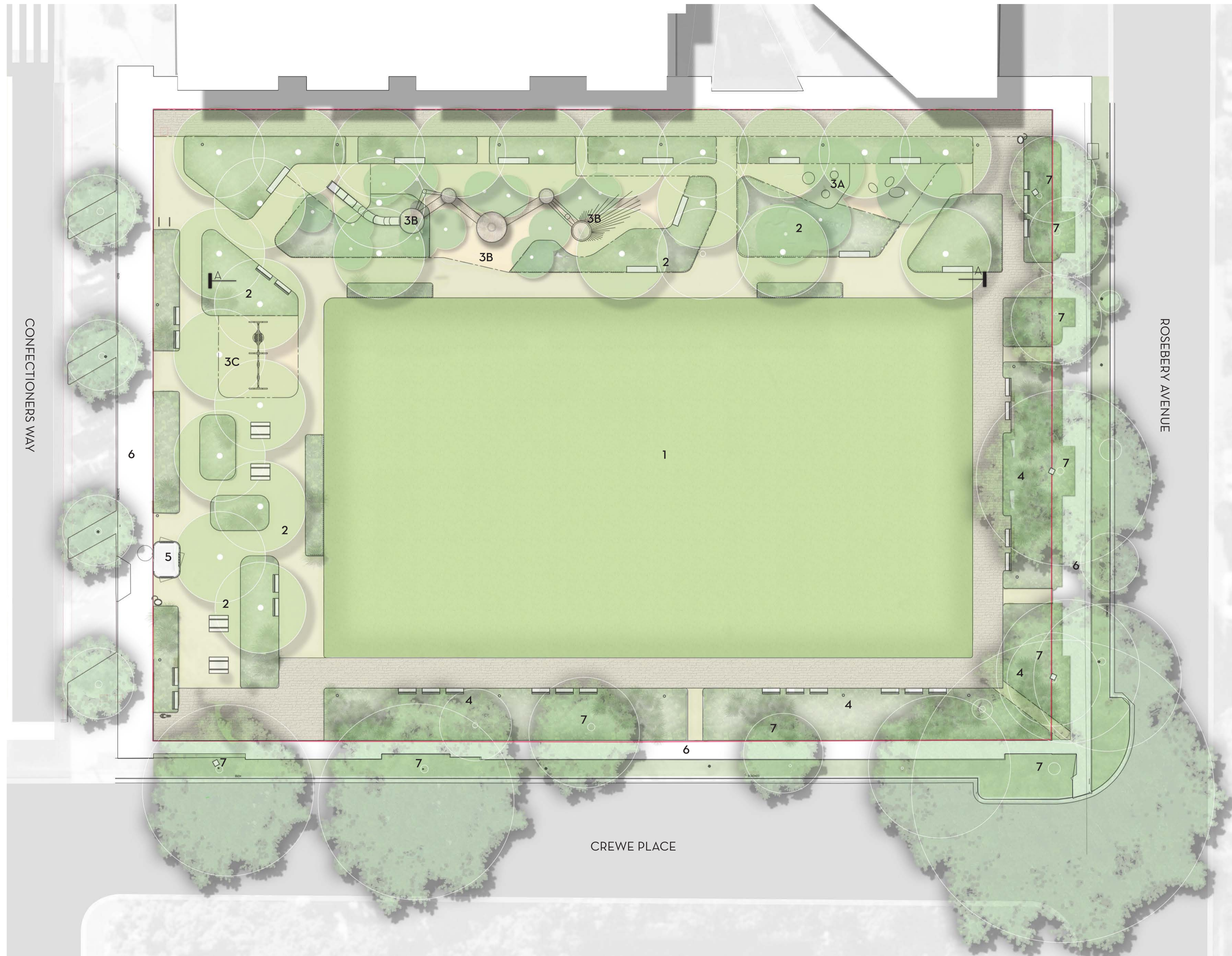


Attachment C

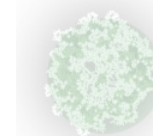

Current Plan of Park and Green Link

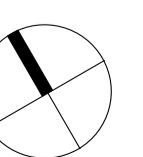


KEY

- 1: THE LAWN
 - An open space for informal play, picnicking and gathering.
 - The orientation maximizes winter sun to the lawn.
- 2: THE TERRACES WITH 'DUNE' GARDENS
 - A terrace is created with shade trees overlooking the lawn.
 - The terraces incorporate play areas and low native gardens
 - The terraces include picnic tables, bench seating drinking fountain and cycle racks.
 - A tree grove provides dappled shade and acts as a green screen framing the park.
- 3: PLAY GROVES
 - A range of play spaces with facilities for children of varying ages.
 - Incorporating themes of nesting, nature play and discovery
 - Emphasis on climbing elements and natural materials.
- 3A: A play zone for younger children incorporating timber sculptures, gardens, steppers and rope hammocks.
- 3B: A play area for older children zone incorporating a custom play structure with rope bridges, platforms, nets and a slide.
- 3C: A swing play grove to the west includes swings facing the lawn.
- 4: THE GARDEN EDGE
 - A garden space with seating located on the eastern and southern park edge providing a low buffer to the street.
 - A mix of native planting to provide habitat for native birds.
- 5: AMENITIES BUILDING by others
- 6: Existing footpaths.
- 7: Existing trees to be retained.

LEGEND

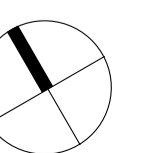
- Scope of works
-  Existing trees
-  New trees

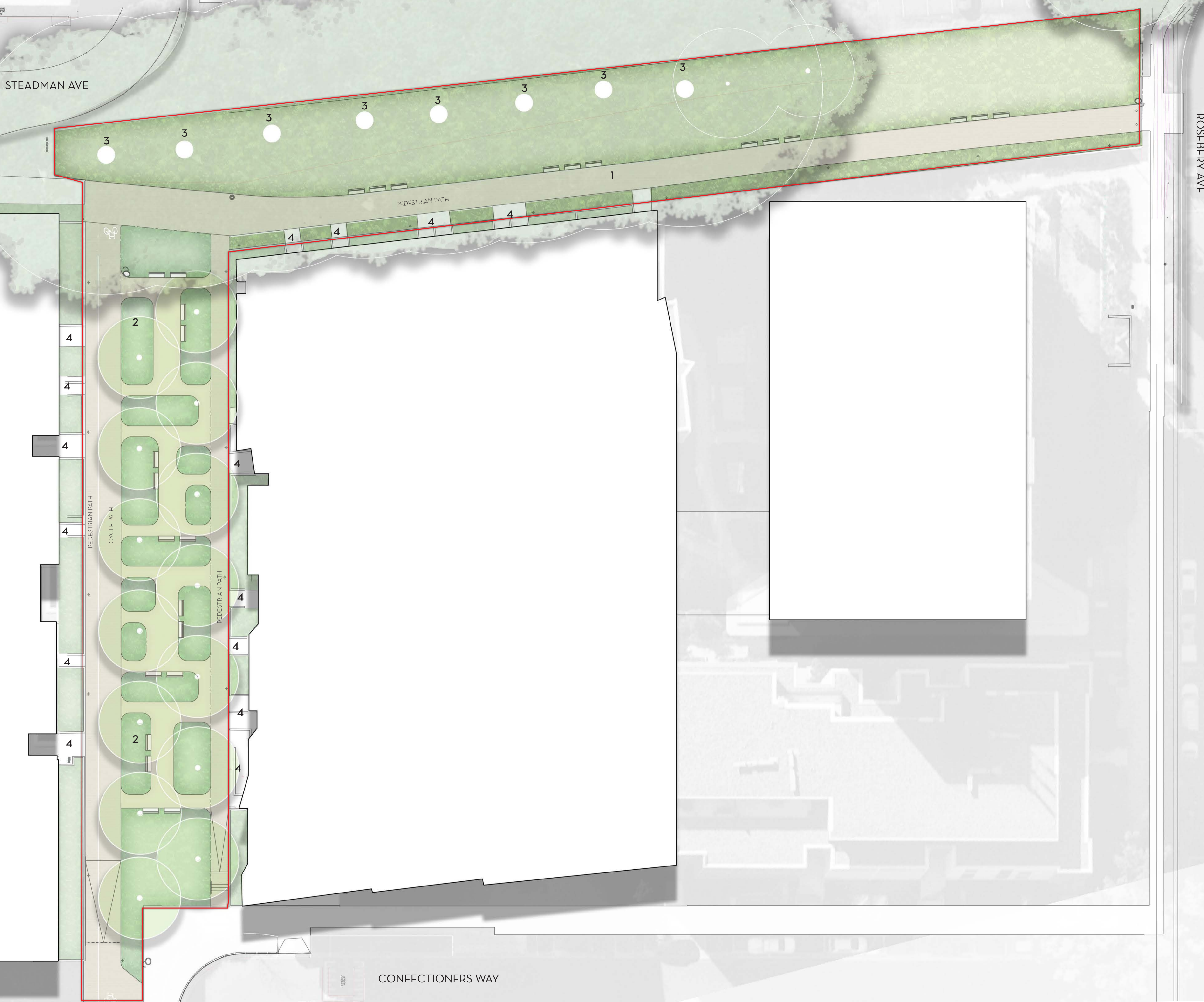
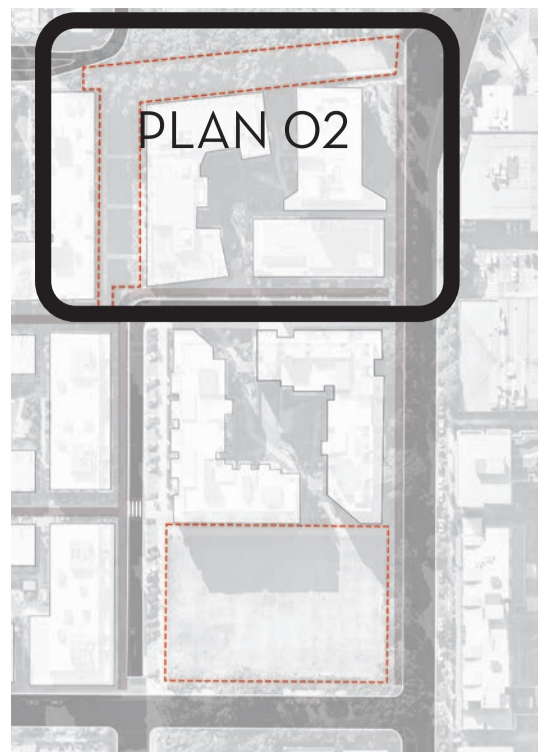




Gum Nest Play Zone: A play area for older children zone incorporating a custom play structure with rope bridges, platforms, nets and a slide.

A play zone for younger children incorporating timber sculptures, gardens, steppers and rope hammocks.





KEY

- 1: GREEN LINK : NORTH
 - An upgraded path connection connecting from Rosebery Avenue to Steadman Avenue.
 - The layout provides wider garden beds with low planting under the existing fig trees.
 - New seating is provided along its length.
 - New tree planting is provided at the eastern entry.

- 2: GREEN LINK: EAST TO WEST
 - An upgraded landscape terrace with gardens, trees and seating.
 - New pedestrian paths are provided on the eastern boundary and a shared pedestrian/ cycle path on the western boundary. The path on the western boundary is wide (3.8m) to accommodate a pedestrian path (1.4m) and cycle path (2.4m).
 - The new shared path includes ramp access to Confectioners Way.
 - The shared way will connect to a future cycleway to be provided on Spring Street

- 3: EXISTING FIGS: to be retained.

- 4. EXISTING APARTMENT ENTRIES

LEGEND

- Scope of works
- Existing trees
- New trees

